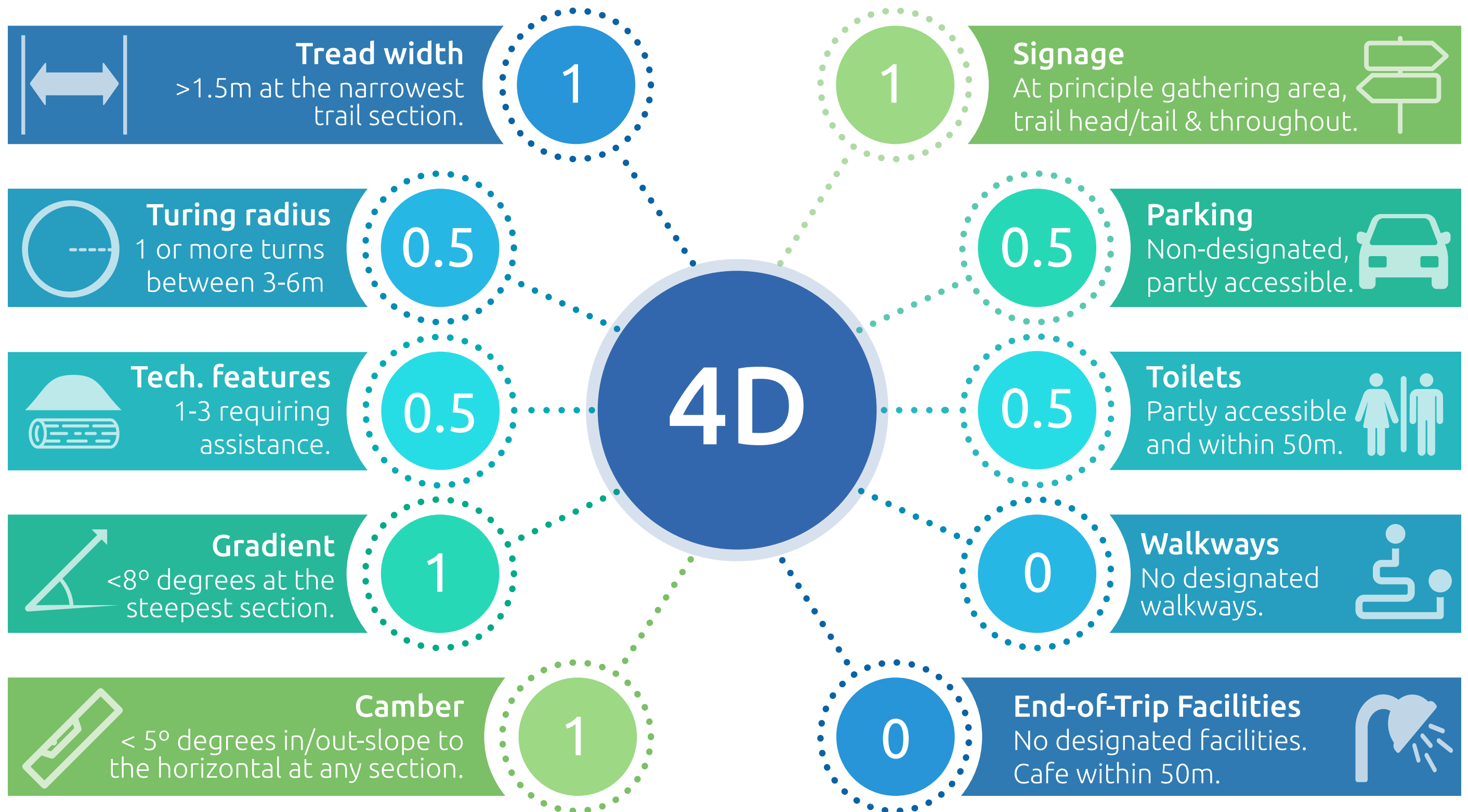




SHAKE, RATTLE N' ROLL

Kalamunda, Western Australia



Additional information

Standard MTB signage used at start/end of trail. Large map on sea-crate at main carpark. Trail start 50m from carpark.
No designated walkways - compact pea-gravel carpark with room for unloading and mobility aids.
Two turning radius <2m. One (1) off-camber jump may require assistance (hard turn and slope >35°).

- Total distance**: 806 m
- Last updated**: 17 Nov. 2017
- Elevation**: 20 m

IMBA Rating **Green**

Continuous loop